



KINDERGARTEN INFORMATION

Class of 2018 - 2019

**Sacred Heart Catholic School
demonstrates academic excellence, faith formation
and service inspired by the teachings of Jesus.**

**Sacred Heart Catholic Parish strives to live and
share the Good News of Jesus Christ.**



Spiritual Goal

Sacred Heart Learning Community will nurture each student to grow as a child of God through Scripture, Catholic traditions, and service.

Academic Goal

Sacred Heart Learning Community will guide students to their greatest academic potential through differentiated instruction in a faith-filled environment.

School Climate Goal

A positive, disciplined and safe Catholic environment will be modeled.

Philosophy Statement

The parents and the staff of Sacred Heart Catholic School provide a safe, Catholic-enriched environment. Together, we encourage our students to achieve academic excellence, discover their potential, and use their gifts to serve God and the world.

Sacred Heart School Pledge

I am a child of God. I will follow the teachings of Jesus. I will show respect for myself and others. I will be truthful. I will be responsible for my words and actions. I will be the best student I can be.



SACRED HEART PARISH AND SCHOOL

GENERAL SCHOOL INFORMATION

ADMISSION: A child must be five years of age before or on September 1st to be enrolled in kindergarten (Michigan HB 4513). Parents must show the school office a certified copy of the child's birth certificate. Sacred Heart School respects the dignity of all students. An essential criterion for admission is the informed acceptance by the student and parents of the fact that the school is Catholic in philosophy and practice. All students must participate in the religious education courses offered for their grade level, participate in the worshipping community while in school, and agree to act in a manner consistent with Christian values. *Parents/guardians are expected to cooperate with all administrative and educational policies of the school. Parents/guardians who do not fully cooperate and/or who are disruptive in their actions to such may be asked to withdraw their children from school.*

Sacred Heart School does not discriminate on the basis of race, nationality, ethnic origin or sex, as required by the terms of Title IX of the Education Act of 1972, Public Law 92-318 (as amended by Public Law 93-568).

Registrations for current Sacred Heart families will be accepted through February 2nd, 2018, at which time applicants will be accepted in the following order, space permitting:

1. Currently enrolled students who have met the previous year's financial obligations.
2. Siblings of currently enrolled students.
3. Children of registered, contributing and participating members of Sacred Heart Parish.
4. Children of families registered in another Catholic parish.
5. Non-Catholics who qualify and agree to conform to the school's religious instruction and policies.

Acceptance letters will go out by February 28, 2018. The contract will accompany the acceptance letter, and should be returned within **10 days** of receiving it.

Those who register after February 2, 2018 are accepted on a first come, first served basis; space permitting.

A **non-refundable** registration fee is due at the time of registration. This registration fee is necessary to ensure a place for the following year. A family with an unpaid tuition balance or any other school related fees (such as, but not limited to: late fees, insufficient fund fees, Legacy Raffle tickets, PPP hours, etc.) for the current year may not register for the following year until tuition for the current year is paid in full, unless special arrangements have been made in writing and signed by the school's principal. Students may be placed on a wait-list if registration is not paid by February 2, 2018.

Wait-listed students will be notified and granted enrollment as space permits.

REGISTRATION: A non-refundable registration fee of \$250 is to be paid to assure your child's place in kindergarten. It is important that the registration fee be paid; if not your child will be placed on a waiting list and new students will be accepted.

TUITION: Each family will receive the Tuition Contract and Guidelines for the 2018 – 2019 school year after their registration fee has been paid. Payment options available will be outlined in the Tuition Contract and Guidelines. Timely payments enable the school to continue to provide the best Catholic education possible. All tuition payments must be made through FACTS.

IMMUNIZATION: By the **first day** of school, all children enrolling in any school in Michigan must submit a Health Form signed by a physician that they have been immunized against hepatitis B, measles, mumps, rubella, diphtheria, tetanus, pertussis, poliomyelitis, and varicella (or current lab immunity or a reliable history of chickenpox disease is acceptable in lieu of the vaccine). A "Required Childhood Immunizations for Michigan School Settings Chart has been included in this packet. Please be advised that kindergartners must also have a documented **VISION SCREENING** prior to entering kindergarten. (MICHIGAN SCHOOL CODE 340.376). Effective January 1, 2015, Michigan modified the administration rules regarding nonmedical waivers for immunizations. Schools can only accept certified nonmedical waivers from the State of Michigan that is stamped and signed by the authorizing agent of the county health department after completing immunization education with the parent/guardian on the form. Information regarding this change is included in this packet.

HEALTH AND SAFETY: If your child becomes ill, the teacher will notify the office immediately. The office will then contact the parent regarding the illness using the names and phone numbers provided on the emergency card kept on file in the school office. Medication may only be administered through the school office if a completed medication authorization form is on file and signed by a doctor. No student will be permitted to leave the school without consent of parents. Parents, or a parent delegate, must pick the child up in the office and sign them out. **Concussion awareness information will be given to parents. A concussion awareness acknowledgement form must be signed prior to the start of physical education class in order for your child to participate in physical education.** This form has been included in this packet. Parents must notify the school if their child has received a concussion.

SCHOOL ABSENCES: 1) Parents must notify the school office by 9:30 a.m. of a child's absence and follow up with a written excuse when the child returns to school. 2) The written excuse should include the student's full name, date(s) of absence, reason for absence and parent or guardian's signature. 3) If a child is tardy, they are to report to the office before entering the classroom. 4) If a child is leaving early during the school day a parent or a parent delegate must report to the office sign-in and then sign the child out.

PUPIL PROGRESS: A parent-teacher conference will be held in November to discuss the child's progress and adaptation to school. Parents are asked to notify the teacher immediately with any concerns. Kindergarten report cards will then be issued in November, January, March or April and June and can be viewed through PowerSchool, our online grading system.

UNIFORMS: Kindergarten students wear a Kindergarten Uniform. The uniform can be purchased at Schoolbelles located at 42073 Ford Road, Canton MI: (734) 983-0280. Enclosed in this Kindergarten Information packet is the Kindergarten Uniform Policy.

VOLUNTEERS: To be a parent volunteer at Sacred Heart Catholic School a parent/guardian must complete *Protecting God's Children*. To register for the class, please go to <http://www.virtus.org/virtus/>. Parents/guardians must also have a background check completed by the school office. The background check form is available in the school office.

KINDERGARTEN SCREENING: Kindergarten Readiness Screening will be on Thursday, May 17th and Friday, May 18th **during the normal school hours of 8:30 a.m. – 3:30 p.m.** You will receive a letter in April with your child's screening time. All students entering into Kindergarten are required to participate in the readiness screening. **Children enrolling in kindergarten are required to submit a birth certificate. Your child's birth certificate is due on screening day.** Originals should be presented in the school where a copy can be made for your child's file.

RELIGIOUS FORMATION: If your child has been baptized Catholic, a copy of your child's baptism certificate is also required for your child's registration process and file.

Revised 1-18-2018

A TYPICAL DAY IN KINDERGARTEN

1. Prayer, Pledge, Calendar & Weather Activities
2. Religion and Bible Story
3. Phonics Activity
4. Reading/Language Arts/ Writing
5. Snack Time
6. Academic Learning Center
7. Math
8. Handwriting
- LUNCH TIME & RECESS**
 (20 minutes for each 12:05-12:25 pm.)
9. Enrichment Class (a different times each day)
10. Developmental Learning Center
11. Science
12. Social Studies
13. Weekly All-School Mass at 9:00 a.m. (on Wednesday)

ENRICHMENT CLASSES:

Art
Computer
Library
Music
Physical Education



1-16-2018

CURRICULUM DEVELOPMENT

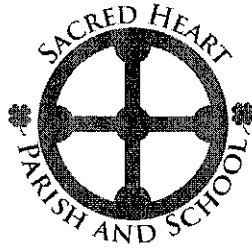
In the Kindergarten classes, there will be learning experiences in the following areas:

RELIGION
READING
PHONICS
MATHEMATICS
COMPUTER USE
HANDWRITING
LIBRARY

MUSIC
ART
PHYSICAL EDUCATION
HEALTH/SCIENCE
SOCIAL STUDIES
WRITING

The learning experiences for each child in the above curriculum are:

1. Spiritual Development: learning prayers, who is Jesus and the Holy Family, Adoration of Mary, love and respect of self, then his/her neighbor, attend all school Mass on Wednesday, Bible Stories, Catholic virtues, God's love for all people, creation.
2. Enjoyment of Literature: listening to stories either read or told, looking at pictures, telling stories, making books, sequencing events, story elements, comprehension, acting out stories
3. Creative Activities: painting, working with clay, crafts
4. Participation in Music: singing, responding rhythmically, using instruments, creative Movement, learning lyrics and motions, finger plays
5. Play Activities: building with blocks, Legos and various manipulatives, kitchen center, math and reading manipulatives, dress-up, drawing
6. Large Muscle Activities: climbing, lifting, building with large and small blocks, physical education classes, hopping on one and two feet
7. Small Muscle Activities: learning to control pencil, scissors, glue and working with puzzles, eye hand coordination activities, coloring, finger plays
8. Skills for Reading: phonemic awareness, letter identification, proper formation of letters, consonant sounds and vowel sounds, left to right progression, recognizing sight words, formation of 3 letter words, reading simple sentences, punctuation, decoding skills, syllables, rhyming
9. Math Skills: number recognition 1-100, place value, number order, greater than and less than, time (hours), basic addition and subtraction, ordinal numbers, 2-D & 3-D geometry, logical thinking, directional skills, graphing and money



KINDERGARTEN UNIFORM POLICY 2018-19

SCHOOLBELLES www.schoolbelles.com

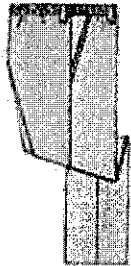
Westland Crossing Plaza

42073 Ford Road

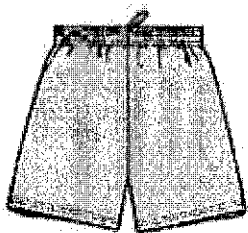
Canton, MI 48187

(734) 983-0280 or 888-637-3037

Sacred Heart School Code: S0559



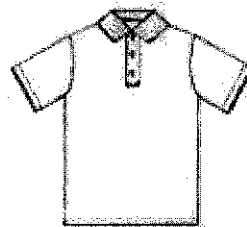
#5204 Navy pants with elastic waist
(must be purchased at **Schoolbelles**)



#3260 Navy shorts with elastic waist
(must be purchased at **Schoolbelles**)

Shoes/Socks – navy or black flat dress shoe (no heels) with solid dark socks (black or navy) or solid white athletic socks with athletic shoes.
No high tops or light-up shoes.

Monogram for Polo Shirts, Sweaters,
and Sweatshirts



#5705 Light blue polo shirt with SH
monogram (must be purchased at
Schoolbelles)

#2056 Navy sweatshirt with SH monogram
(must be purchased at **Schoolbelles**)

#1933 Navy V-Neck pullover sweater
(must be purchased at **Schoolbelles**)

PARENTS

VACCINES REQUIRED FOR SCHOOL ENTRY IN MICHIGAN

Whenever children are brought into group settings, there is a chance for diseases to spread. Children must follow state vaccine laws in order to attend school. These laws are the minimum standard to help prevent disease outbreaks in school settings. The best way to protect your child from other serious diseases is to follow the recommended vaccination schedule at www.cdc.gov/vaccines. Talk to your health care provider to make sure your child is fully protected.



	All Kindergarteners and 4-6 year old transfer students	All 7th Graders and 7-18 year old transfer students
Diphtheria, Tetanus, Pertussis (DTP, DTaP, Tdap)	4 doses DTP or DTaP 1 dose must be at or after 4 years of age	4 doses D and T or 3 doses Td if 1st dose given at or after 1 year of age 1 dose Tdap at 11 years of age or older upon entry into 7th grade or higher
Polio	4 doses 3 doses if dose 3 was given at or after 4 years of age	
Measles, Mumps, Rubella (MMR)*	2 doses at or after 12 months of age	
Hepatitis B*	3 doses	
Meningococcal Conjugate (MenACWY)	None	1 dose at 11 years of age or older upon entry into 7th grade or higher
Varicella (Chickenpox)*	2 doses at or after 12 months of age or Current lab immunity or History of varicella disease	

During disease outbreaks, incompletely vaccinated students may be excluded from school. Parents and guardians choosing to decline vaccines must obtain a certified non-medical waiver from a local health department. Read more about waivers at www.michigan.gov/immunize.

*If the child has not received these vaccines, documented immunity is required.

All doses of vaccines must be valid (correct spacing and ages) for school entry purposes.



Nonmedical Waiver Rule for Childhood Immunizations in School and Licensed Childcare: Information for Parents/Guardians

In early 2015, Michigan instituted an administrative rule change on nonmedical waivers for childhood immunizations. Parents/guardians seeking to obtain a nonmedical immunization waiver on behalf of their child/children who are enrolled in school or licensed child-care programs are required to attend an educational session, where they are provided with information about vaccine-preventable diseases and vaccinations.

Frequently Asked Questions:

Why is this rule important?

Michigan has one of the highest immunization waiver rates in the country, with some counties reporting waiver rates up to 12.5% (that is, more than 12% of school-age students in these places have not received all vaccinations). In addition, individual school buildings have reported even higher waiver rates. High nonmedical waiver rates can leave communities susceptible to the entry of diseases such as measles, chickenpox, and pertussis (whooping cough) by undermining community or “herd” immunity that protects vulnerable children (for example, children who cannot be vaccinated for medical reasons and children with compromised immune systems). Herd immunity can also slow the spread of disease if a high proportion of individuals are immune to the disease in a community. Immunization is one of the most effective ways to protect children from harmful diseases and even death.

How does this rule affect parents/guardians?

Parents/guardians seeking to claim a nonmedical waiver are required to participate in an immunization-focused discussion with county health department staff. During the discussion, immunization-related questions and concerns of parents/guardians can be brought up for discussion with the county health department staff. The staff will present evidence-based information regarding the risks of vaccine-preventable diseases and the benefits/risks (mostly moderate side-effects) of vaccination. This rule preserves the ability of parents/guardians to obtain a nonmedical waiver following completion of this required educational session.

What is a nonmedical immunization waiver?

A nonmedical waiver is a written statement by parents/guardians describing their religious or philosophical (other) objections to specific vaccine/vaccines, on a form provided by the county health department.

Who does this rule apply to?

The rule applies to parents seeking an immunization waiver on behalf of their children who are enrolling in a public or private:

- Licensed child-care, preschool, and Head Start programs
- Kindergarten, 7th grade, and any newly enrolled student into the school district

What is considered a certified nonmedical waiver?

A certified nonmedical waiver is the State of Michigan Immunization Waiver Form with a revision date of January 1, 2017, displaying the county health department stamp and signatures of the authorizing agent completing the immunization education and the parent/guardian.

Can a parent/guardian obtain a certified nonmedical waiver form from a school, childcare center, or healthcare provider?

No, a certified nonmedical waiver can only be obtained at a county health department.

How does a parent/guardian obtain a certified nonmedical waiver?

Parents/guardians are required to contact their county health department to receive immunization waiver education and a current certified State of Michigan Immunization Waiver Form.

What if my child has a medical contraindication to a vaccine?

This rule does not change the existing process for medical contraindications to vaccination. If your child has a medical reason (that is, a true contraindication or precaution) for not receiving a vaccine, a physician must sign the State of Michigan Medical Contraindication Form (which is available at your doctor's office, and not the county health department). This form must be completed and signed by a physician before it can be submitted to a school or child-care center.

What documentation are parents/guardians required to submit to their school or child-care center?

1. Parents/guardians are required to submit one of the following documents:

- A complete immunization record **or**
- A physician-signed State of Michigan Medical Contraindication Form **or**
- A current, certified State of Michigan Nonmedical Immunization Waiver Form

If one of the above forms is not submitted, then students can be excluded from school or childcare based on the public health code, unless students are in a provisional category. (Provisional is defined as a child who has received 1 or more doses of vaccine, however they need to wait the recommended time to receive the next dose)

2. Waiver forms that are altered in any fashion (for example: information on the form is crossed out) cannot be accepted by schools/child-care programs.

Where can I find more information?

For more information, please visit www.michigan.gov/immunize > then click on *Local Health Departments* > then click on *Immunization Waiver Information*.

- The above website provides a complete list of county health departments in Michigan, including phone numbers and addresses.

Dear Parent/Guardian:



Key Points Related to Claiming a Nonmedical Immunization Waiver for Children Attending Michigan Schools and Licensed Child-Care Centers

In early 2015, Michigan instituted an administrative rule change on nonmedical waivers for childhood immunizations. Parents/guardians seeking to obtain a nonmedical immunization waiver on behalf of their child/children who are enrolled in school or licensed child-care programs are required to attend an educational session where they are provided with information about vaccine-preventable diseases and vaccinations.

- Michigan has one of the highest immunization waiver rates in the country, with select counties reporting waiver rates up to 12.5% (that is, more than 12% of school-age students in these places have not received all vaccinations) and individual school buildings reporting even higher waiver rates

Key Points

- The rule applies to parents seeking an immunization waiver on behalf of their children enrolled in a public or private:
 - Licensed childcare, preschool, and Head Start programs
 - Kindergarten, 7th grade, and any newly enrolled student into the school district
- This rule preserves your ability to obtain a nonmedical waiver.
- Nonmedical waivers (religious or philosophical/other objections) are available at your county health department and cannot be found at schools/child-care centers.
- Parents/Guardians are required to follow these steps when seeking a nonmedical waiver:
 1. Contact your county health department for an appointment to speak with a health educator.
 2. During the visit, immunization-related questions and concerns of the parents/guardians can be brought up for discussion with the county health department staff. The staff will present evidence-based information regarding the risks of vaccine-preventable diseases and the benefits/risks (mostly moderate side-effects) of vaccination.
 3. If, at the end of the visit, you request a nonmedical waiver for your child, you will receive a copy of the current, certified (stamped and signed) State of Michigan Nonmedical Waiver Form.
 - Schools/childcare centers will only accept the current, official State of Michigan form (Current date: January 1, 2017).
 - Forms cannot be altered (such as crossing information out).
 4. Take current, certified waiver form to your child's school or childcare center.
- If your child has a medical reason (that is, a true contraindication or precaution) for not receiving a vaccine, a physician must sign the State of Michigan Medical Contraindication Form, available at your doctor's office (not the county health department).
- Based on the public health code, a child without either an up-to-date immunization record, a certified nonmedical waiver form, or a physician-signed medical waiver form can be excluded from school/childcare.

For more information, please visit www.michigan.gov/immunize > then click on *Local Health Departments* > then click on *Immunization Waiver Information*. On this website, there is a link to a list of all the county health departments, along with their addresses and phone numbers.

April 12, 2017

Some common symptoms

- Headache
- Pressure in the head
- Nausea/vomiting
- Dizziness
- Balance problems
- Double vision
- Blurry vision
- Sensitivity to light
- Sensitivity to noise
- Sluggishness
- Haziness
- Fogginess
- Grogginess
- Poor concentration
- Memory problems
- Confusion
- "Feeling down"
- Not "feeling right"
- Feeling irritable
- Slow reaction time
- Sleep problems
- Appears dazed and stunned
- Disoriented or confused
- Forgets an instruction

UNDERSTANDING Information for parents and students (Content meets MDCH requirements)

CONCUSSION

What is a concussion?

A **concussion** is a type of traumatic brain injury that changes the way the brain normally works. A concussion is caused by a bump, blow, or jolt to the head or body that causes the head and brain to move quickly back and forth. It can also be caused by the shaking or spinning of the head or body. Even a "ding," "getting your bell rung," or what seems to be a mild bump or blow to the head can be serious.

You can't see a concussion. Signs and symptoms of concussions can show up right after the injury or may not appear or be noticed until days or weeks after the injury. If the student reports any symptoms of a concussion, or if you notice symptoms yourself, seek medical attention right away.

If you suspect a concussion

1. SEEK MEDICAL ATTENTION RIGHT AWAY A health care professional will be able to decide how serious the concussion is and when it is safe for the student to return to regular activities, including sports.

2. KEEP YOUR STUDENT OUT OF PLAY

Concussions take time to heal. Don't let the student return to play the day of the injury and until a health care professional says it's OK. Students who return to play too soon-while the brain is still healing-risk a greater chance of having a second concussion. Repeat or second concussions can be very serious. They can cause permanent brain damage, affecting the student for a lifetime.

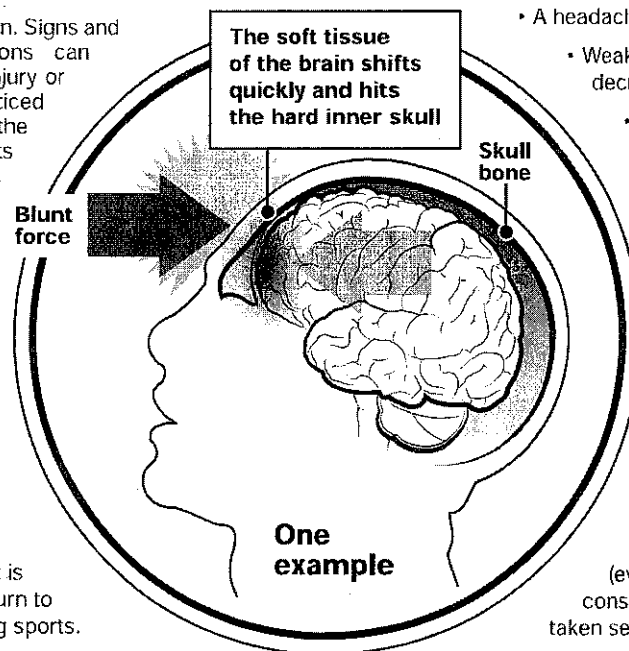
3. TELL THE SCHOOL ABOUT ANY PREVIOUS CONCUSSION

Schools should know if a student had a previous concussion. A student's school may not know about a concussion received in another sport or activity unless you notify them.

Concussion danger signs

In rare cases, a dangerous blood clot may form on the brain in a person with a concussion and crowd the brain against the skull. A student should receive immediate medical attention if after a bump, blow, or jolt to the head or body s/he exhibits any of the following danger signs:

- One pupil larger than the other
- Is drowsy or cannot be awakened
- A headache that gets worse
- Weakness, numbness, or decreased coordination
- Repeated vomiting or nausea
- Slurred speech
- Convulsions or seizures
- Cannot recognize people or places
- Becomes increasingly confused, restless, or agitated
- Has unusual behavior
- Loses consciousness (even a brief loss of consciousness should be taken seriously)



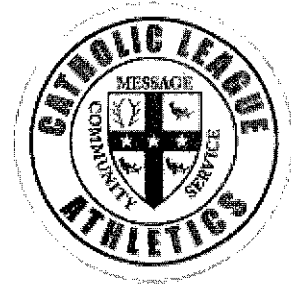
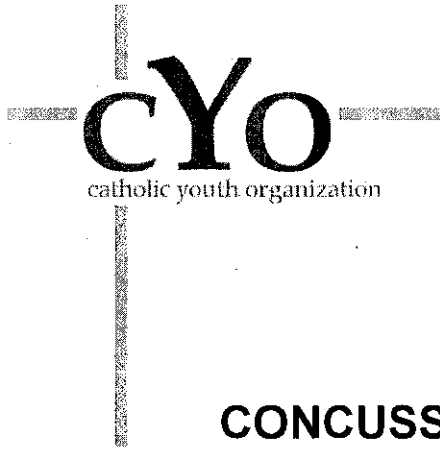
How to respond to a report of a concussion

If a student reports one or more symptoms of a concussion after a bump, blow, or jolt to the head or body, s/he should be kept out of athletic play the day of the injury. The student should only return to play with permission from a health care professional experienced in evaluating for concussion.

During recovery, exercising or activities that involve a lot of concentration (such as studying, working on the computer, or playing video games) may cause concussion symptoms to reappear or get worse.

Sources: Michigan Department of Community Health and the National Operating Committee on Standards for Athletic Equipment (NOCSAE)

!!! WHEN IN DOUBT...SIT OUT !!!



CONCUSSION AWARENESS

EDUCATIONAL MATERIAL ACKNOWLEDGEMENT

By my name and signature below, I acknowledge in accordance with Public Acts 342 and 343 of 2012 that I have received and reviewed the Concussion Fact Sheet for Parents and Students provided by _____

School/Parish

Student Name Printed

Parent or Guardian Name Printed

Student Name Signature

Parent or Guardian Signature

Date

Date

Return this signed form to the School/Parish. The School/Parish must keep this on file for the duration of enrollment/participation and until age 25.

Students and parents should review and keep the educational materials available for future reference.



Catholic Schools
Teaching Minds. Reaching Hearts.